

24481 Lenah Trails Pl, Aldie, VA 20105

VALO390236

Price	\$700,000
Subdivision	THE SPRINGS AT LENA/ROCKBRIDGE
Year Built	2010
SF	3,318
Levels	THREE
Bedrooms	FOUR + LOFT
Baths	THREE FULL, ONE HALF
Taxes 2019	\$6,195
HOA Fee	\$325/QUARTERLY
Heat	PROPANE GAS & HEAT PUMP
Cooling	ELECTRIC
Hot Water	ELECTRIC
Fireplace	GAS
Outdoor Living	DECK, PATIO, FULLY FENCED, BACKS TO WETLANDS PRESERVATION & POND
Parking	2-CAR GARAGE SIDELOAD & 1-CAR GARAGE FRONTLOAD
Elementary School	ALDIE
Middle School	MERCER
High School	JOHN CHAMPE
Home Improvements	2018 KITCHEN EXHAUST FAN 2015 HARDWOODS FR, STAIRS, UPPER HALLWAY 2015 FENCE 2012 PATIO 2011 DECK

For photos and movie tour visit TraciSellsVirginia.com

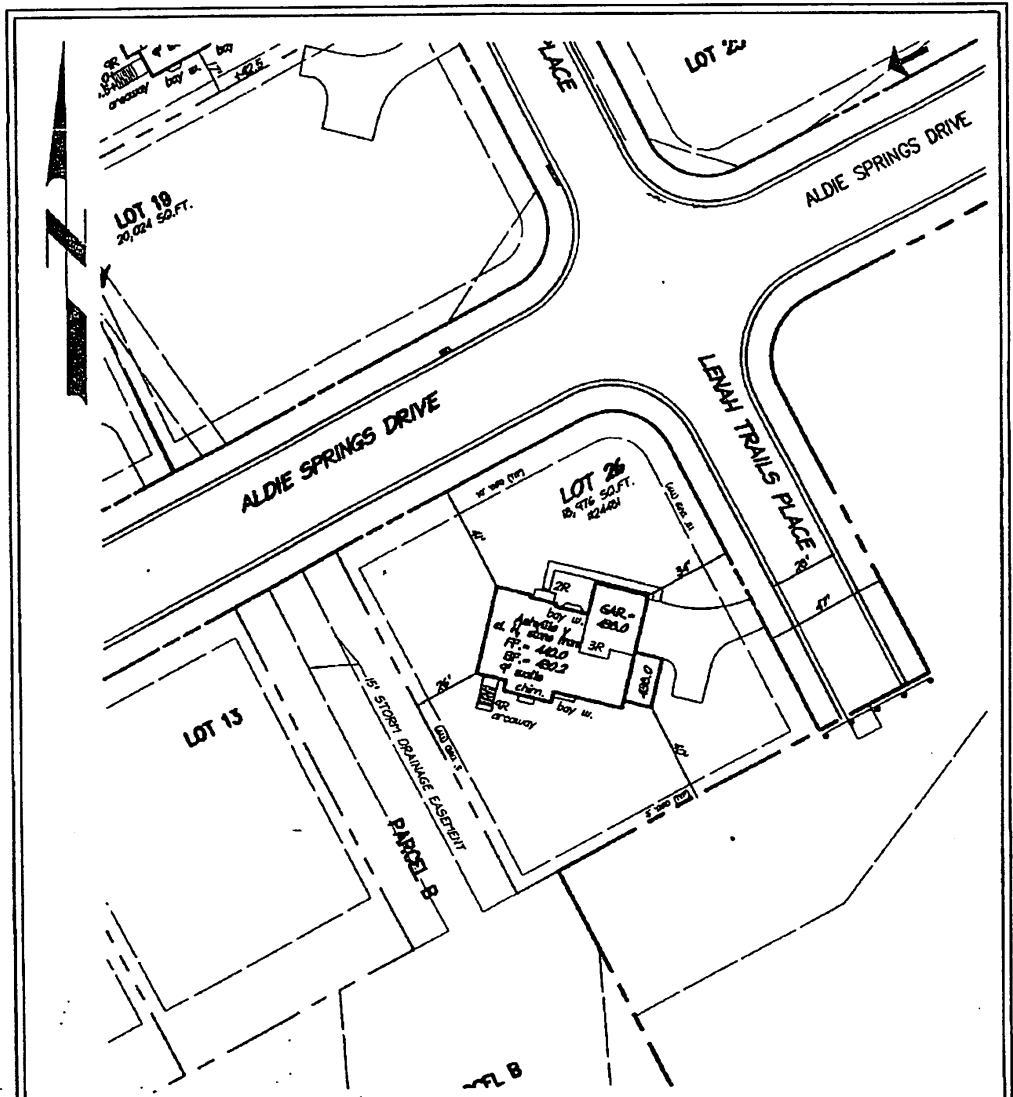


BETH WALSH

REALTOR
703 966 6383
Beth@TraciOliverTeam.com
TraciSellsVirginia.com

Long & Foster | Christie's
International Real Estate
13135 Lee Jackson Mem Hwy, 100
Fairfax, VA 22033 | 703 968 7000





ZONING PLAN
ROCKBRIDGE
SECTION I
LOT 26
 PIN # 326-49-5478

#24481 LENA TRAILS PLACE
 ALDIE, VIRGINIA 20105
 DULLES ELECTION DISTRICT
 LOUDOUN COUNTY, VIRGINIA
 SCALE = 1"=50' DATE: AUGUST 27, 2008

NOTES

1. THE PROPERTY DELINEATED ON THIS PLAT IS LOCATED ON LOUDOUN COUNTY PIN NO. 326-49-5478, AND IS CURRENTLY ZONED TR-1, PER THE REVISED 1993 LOUDOUN COUNTY ZONING ORDINANCE SECTION 5-701.
2. TR-1 ZONE, MINIMUM YARD SETBACKS:
 FRONT= 10'
 SIDE= 5'
 REAR= 25'
 MAXIMUM BUILDING HEIGHT= 40'
3. OWNER/BUILDER:
 THE DREES COMPANY
 9817 GODWIN DRIVE
 MANASSAS, VA 20110
 PHONE: 703-257-3434

9401 CENTREVILLE ROAD
 SUITE 300
 MANASSAS, VIRGINIA 20110
 PH 703-257-5600
 FX 703-257-5656

LAND DESIGN
CONSULTANTS
 PLAN FOR SUCCESS
 Established 1985
 www.ldc-va.com