

9664 Maymont Drive, Vienna VA 22182
FX10205613 | Offered at \$2,495,000

Major Home Features

- Basheer & Edgemoor French provincial home
- Paver courtyard front entry
- 4-zone HVAC system
- 4-car garage
- Elevator
- Exquisite architectural details
- 10' Ceilings
- Wainscoting, crown moulding & recessed light throughout entire home
- Custom built-ins throughout
- 3 gas fireplaces
- 6 bedrooms, 6 full baths, 2 half baths
- 6,218 sf
- Public Water/Sewer

Main Level Features

- Iron ballustered staircases
- Hardwood flooring
- 2-sided gas fireplace connects family room & keeping room
- Gourmet kitchen w/ custom glazed cabinetry, SS appliances, duel fuel 6-burner range, wall ovens, built in refrigerator, dramatic hood accented, custom backsplash, seeded glass fronts, pot filler, island/ breakfast bar
- Butler's pantry/wet bar w/ ice machine, beverage refrigerator
- Walk-in pantry w/ custom built-in organizers
- Formal living room w/ gas fireplace
- Formal dining room flanks foyer
- Library w/ wood finishes and built-in cabinetry
- 2nd rear staircase
- Mudroom with laundry area
- Access to breezeway & both garages
- 2 half baths

Upper Level Features

- Master suite w/ hardwood floors, plantation shutters, tray ceiling & coffee bar w/ beverage refrigerator, 2 large walk-in closets w/ built-in closet organizers
- Spa bath w/ radiant heat flooring, separate granite vanities, jetted soaking tub & oversized dual head shower w/ glass door & tile accents
- 3 additional bedrooms each w/ ensuite bath & walk-in closet
- 2nd laundry area on UL

Lower Level Features

- Walkout w/ full-size windows
- Custom wet bar w/ beverage refrigerator, ice machine & dishwasher
- Oversized recreational room w/ media & gaming areas
- 2-sided gas fireplace
- Additional large bedroom
- Full bath on LL
- Ample storage space

Exterior Features

- Stone & brick exterior
- Hardi-plank on rear of home
- Salt water swimming pool w/ fountain
- Custom paver patio
- Multi-level deck w/ iron rails & stone columns
- Built-in hot tub & fire pit
- Fully fenced rear yard
- Irrigation system
- Professional landscaping
- Two 2-car garages connected by a breezeway
- Studio above garage w/ full bath & private entrance



TRACI OLIVER

REALTOR
703 505 7614
Traci@TraciOliverTeam.com
TraciSellsVirginia.com

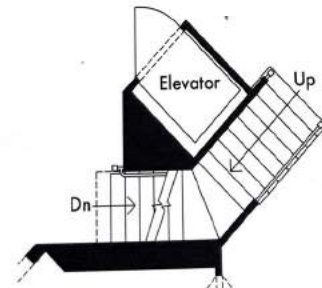
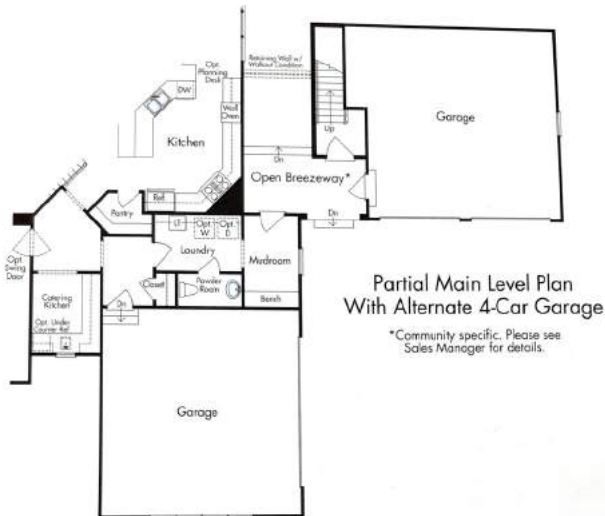
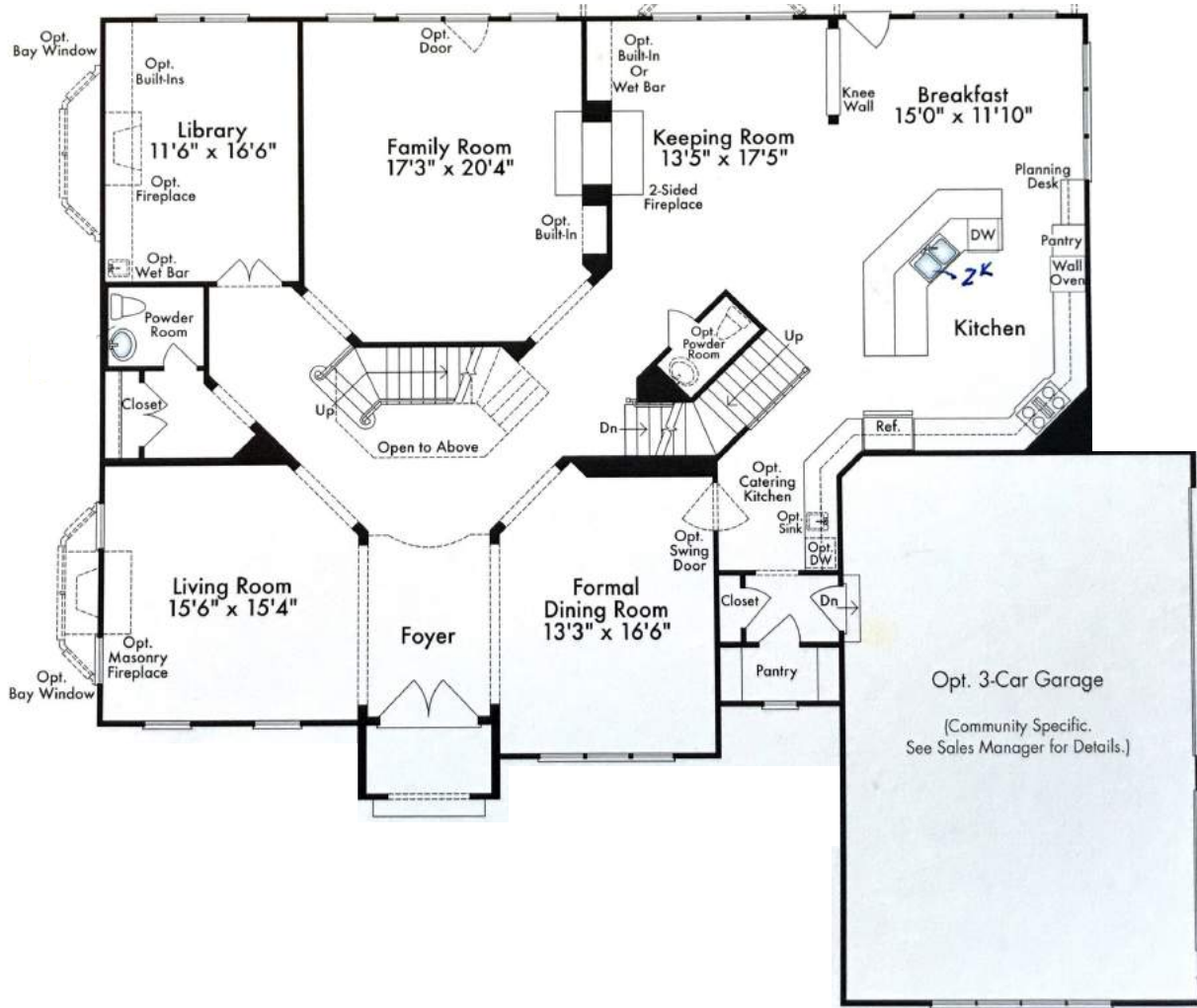
TTR Sotheby's International Realty
6723 Whittier Ave Suite 100
McLean, VA 22101
703 319 3344



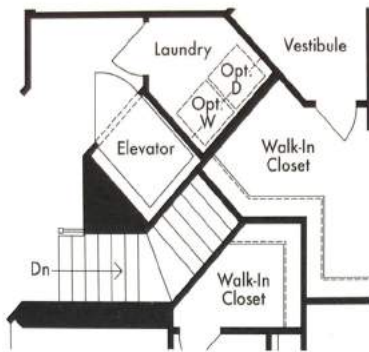
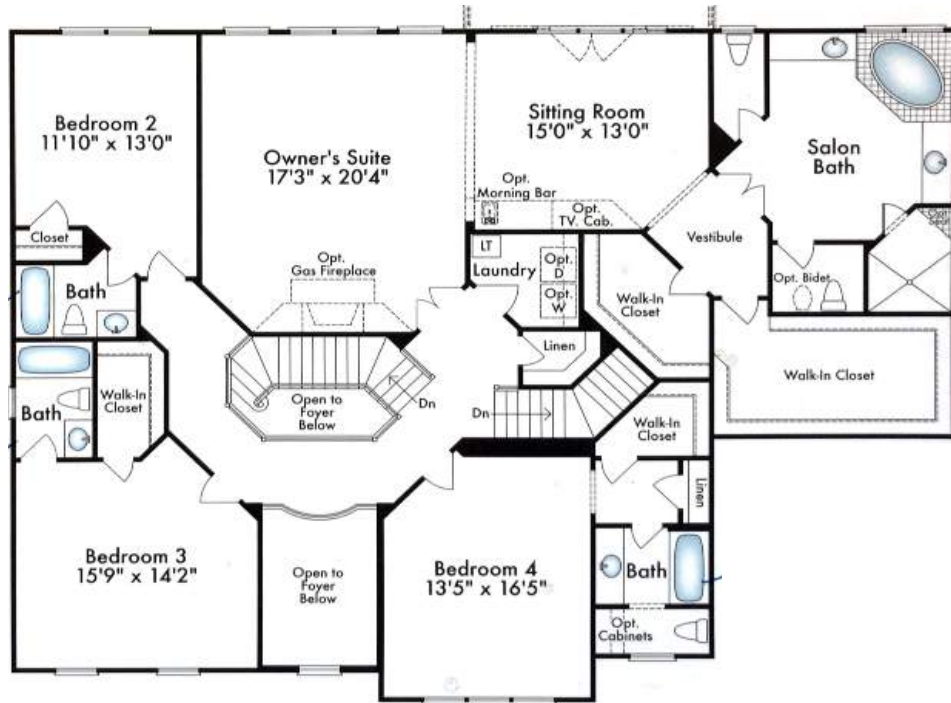
Sotheby's International Realty and the Sotheby's International Realty logo are registered (or unregistered) service marks used with permission. Each Office Is Independently Owned And Operated. If your property is listed with a real estate broker, please disregard. It is not our intention to solicit the offerings of other real estate brokers. We are happy to work with them and cooperate fully. All information contained in this brochure is provided in good faith and is believed to be accurate. But as it is provided by third parties, it cannot be guaranteed.



THE INNSWORTH MAIN LEVEL



THE INNSWORTH UPPER LEVEL



Partial Upper Level Plan
With Optional Elevator



Partial Upper Level Plan
With Studio Over
Alternate 4-Car Garage

THE INNSWORTH LOWER LEVEL

