

8108 Bellingham Ct, Fairfax Station VA 22039

VAFX1115194 | Offered at \$1,099,000

Major Home Highlights

- Less than 5 years old
- Backs to Parkland
- Multi-zone HVAC system
- Brazilian Cherry Natural 5" Wide Plank Solid Wood main and upper levels
- Exquisite architectural details
- Quality chandeliers and lighting fixtures
- Ceiling fans in all bedrooms
- Recessed lights throughout entire home
- 2 fireplaces
- 6 bedrooms, 5 full baths, 1 half bath
- 6,103 sf

Main Level Highlights

- Brazilian Cherry Natural 5" Wide Plank Solid Wood flooring
- 2-story foyer with leaded glass entry door
- Sweeping wood staircase with iron balusters
- Formal LR w/ 3-D accent wall and vaulted architectural ceiling
- Formal DR with picture frame moulding accents
- Gourmet kitchen w/ custom glazed cherry cabinetry, Quartz countertops to include oversized island, tile backsplash with mosaic accents, under counter LED lighting, serving and butler's pantry, large walk-in pantry, bay window breakfast nook & bar seating overlooking family room
- 2 story family room with palladium window, Contemporary Linear Vent-Free gas fireplace, 3-D accent wall with LED lit art niches
- Powder room with furniture grade vanity
- Laundry/mudroom with front load washer/dryer, cabinetry, sink and service door
- 2-car garage with floor coating
- Main level bedroom suite with 2 walk-in closets, french door to deck and full bath to include soaking tub, frameless glass shower, dual sinks, water closet and stained glass window

Upper Level Highlights

- Master suite w/ vaulted ceiling
- Walk-in closet with custom closet organizer
- Master bath w/ multi-head frameless shower, jetted tub, separate vanities, water closet, stained glass
- Princess suite with ensuite bath, 2 closets
- Jack and Jill suite with double vanities, separate shower and water closet areas and large closets in both bedrooms

Lower Level Highlights

- Walkout level with french door and full size windows
- Oversized recreational room w/ media & gaming areas
- Contemporary Linear Vent-Free gas fireplace
- Custom wet bar w/ ample cabinetry, full size refrigerator, quartz counters and mosaic glass tile backsplash and details
- Bedroom with walk-in closet and dual entry full bath
- Home Gym with engineered hardwood flooring and wall of mirrors
- Craft/playroom
- Ample storage

Exterior Highlights

- Brick-front exterior
- Brick walkway and front stoop
- Extensive rear deck w/ wrought iron railings
- Large stamped concrete patio
- Backs to Fairfax County Parkland with mature trees
- Quality exterior lighting, post lamp and floodlights
- Security cameras
- Landscaped yard

LONG & FOSTER®
REAL ESTATE

CHRISTIE'S
INTERNATIONAL REAL ESTATE



TRACI OLIVER

REALTOR

703 505 7614

Traci@TraciOliverTeam.com

TraciSellsVirginia.com

Christie's International Realty

13135 Lee Jackson Mem Hwy, 100

Fairfax, VA 22033

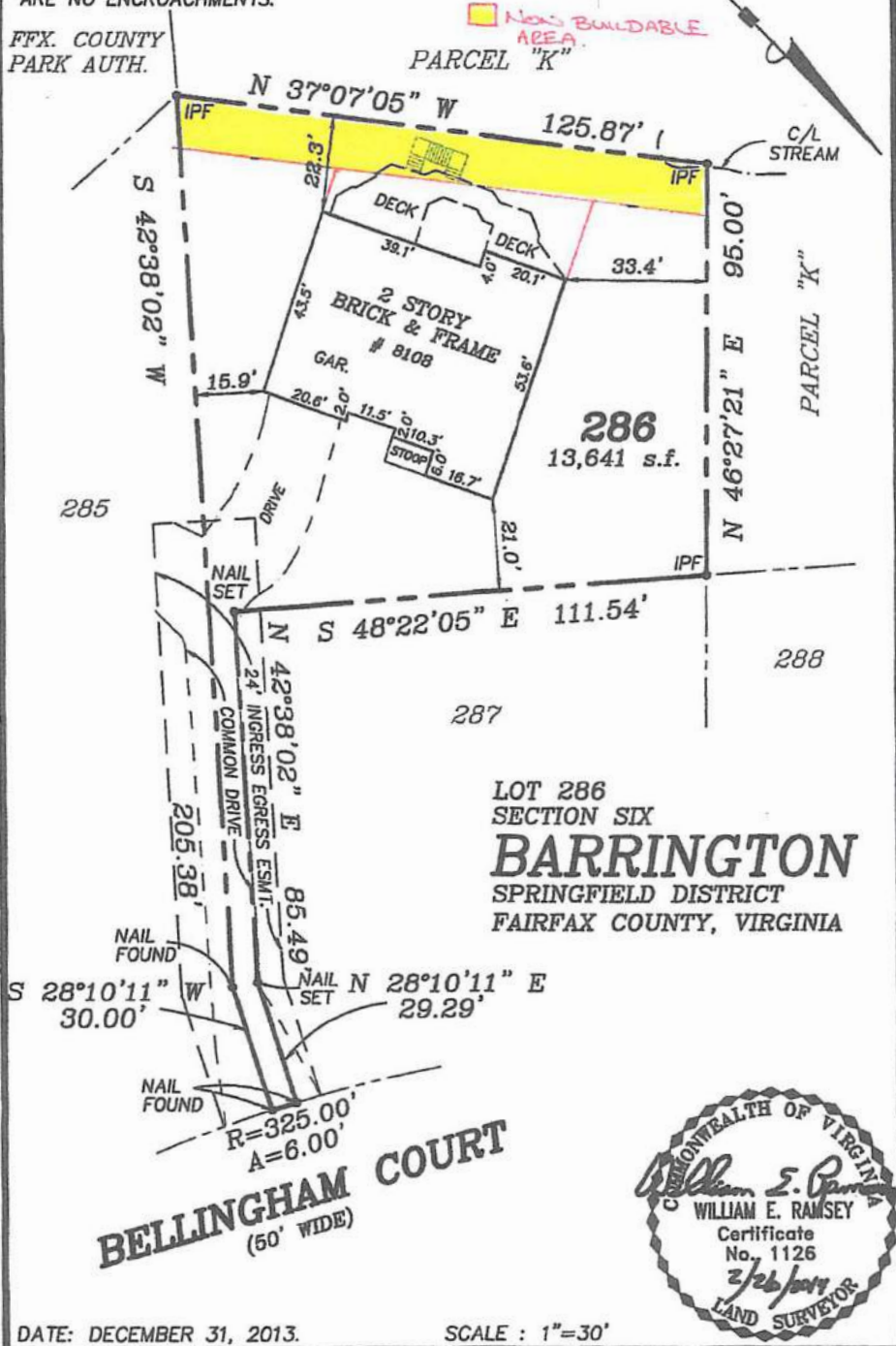
703 968 7000



The Traci
Oliver
Team
TraciSellsVirginia.com

HOUSE LOCATION SURVEY

NOTE: I HEREBY CERTIFY THAT THE POSITION OF THE EXISTING IMPROVEMENTS ON THE BELOW DESCRIBED PROPERTY HAS BEEN CAREFULLY ESTABLISHED BY A TRANSIT TAPE (ELECTRONIC DISTANCE METER) SURVEY AND UNLESS OTHERWISE SHOWN, THERE ARE NO ENCROACHMENTS.

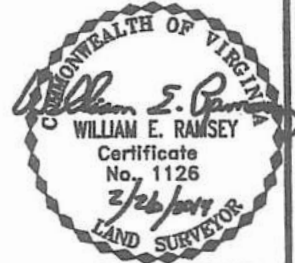


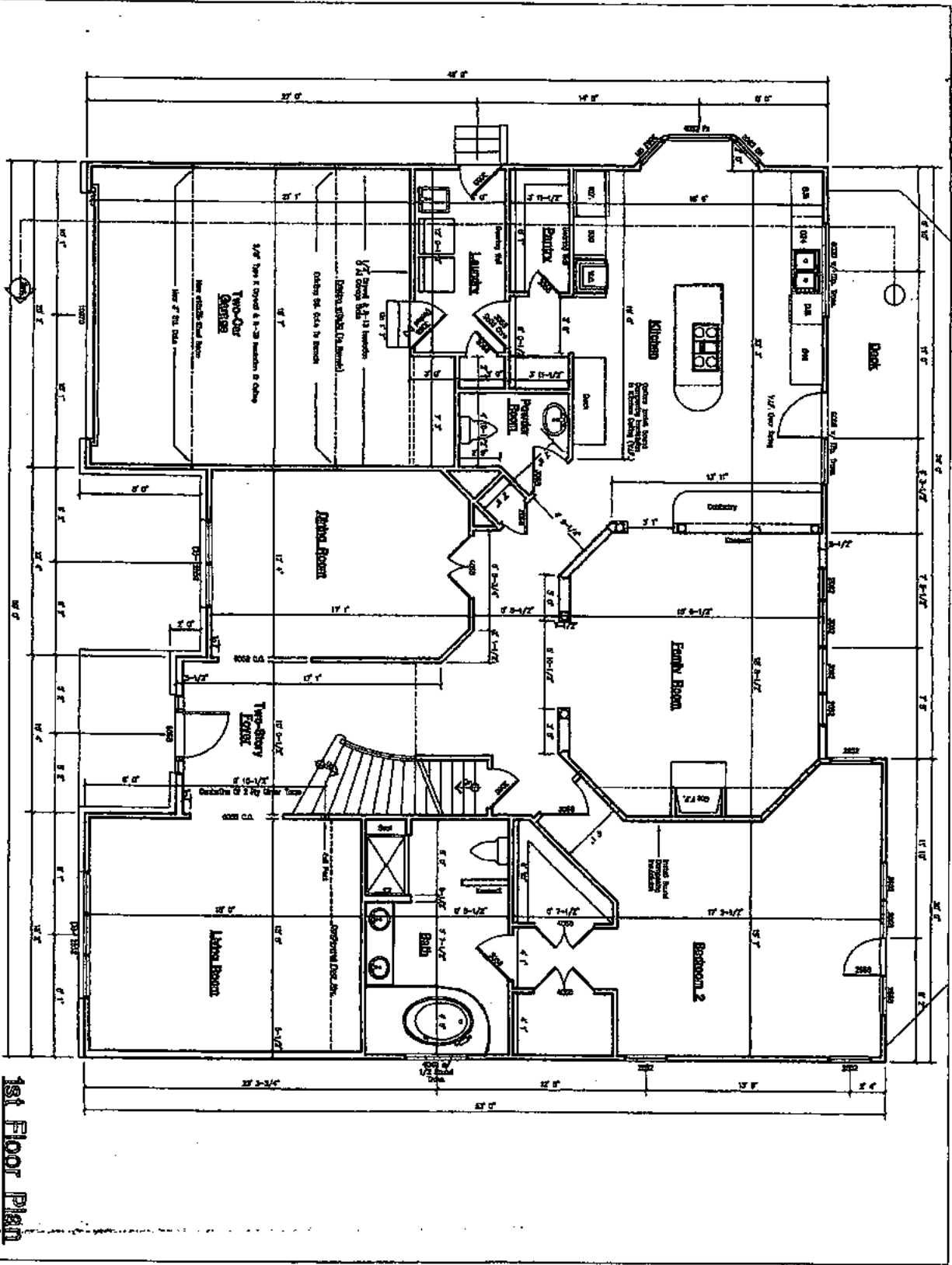
DATE: DECEMBER 31, 2013.

SCALE : 1"=30'

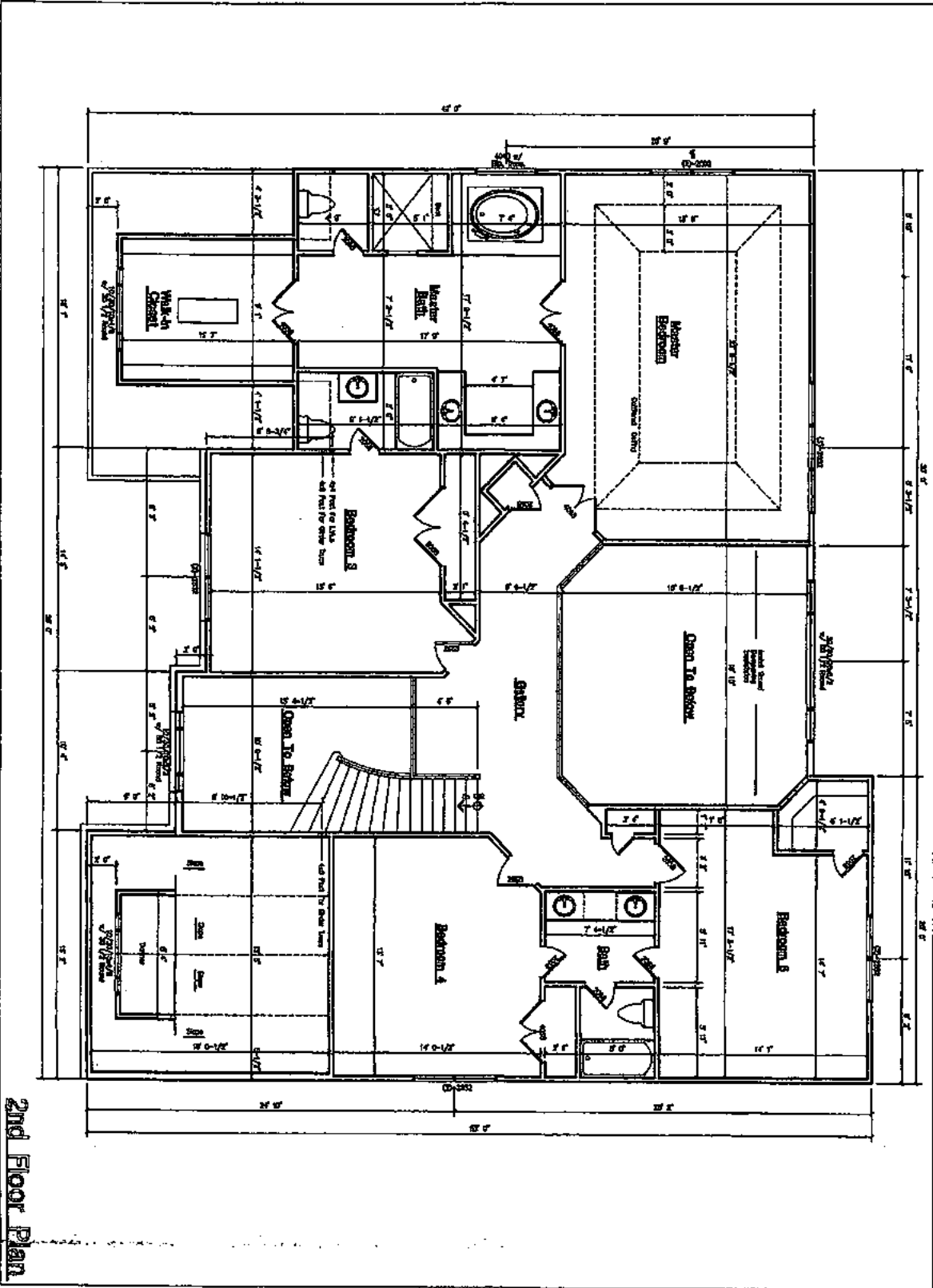
TITLE REPORT NOT FURNISHED.
 FENCES, IF SHOWN, ARE APPROXIMATE ONLY AND DO NOT CERTIFY AS TO OWNERSHIP.
 IPF-DENOTES IRON PIPE FOUND.

WILLIAM E. RAMSEY, P.C.
 LAND SURVEYOR
 FAIRFAX, VIRGINIA
 703-385-4499

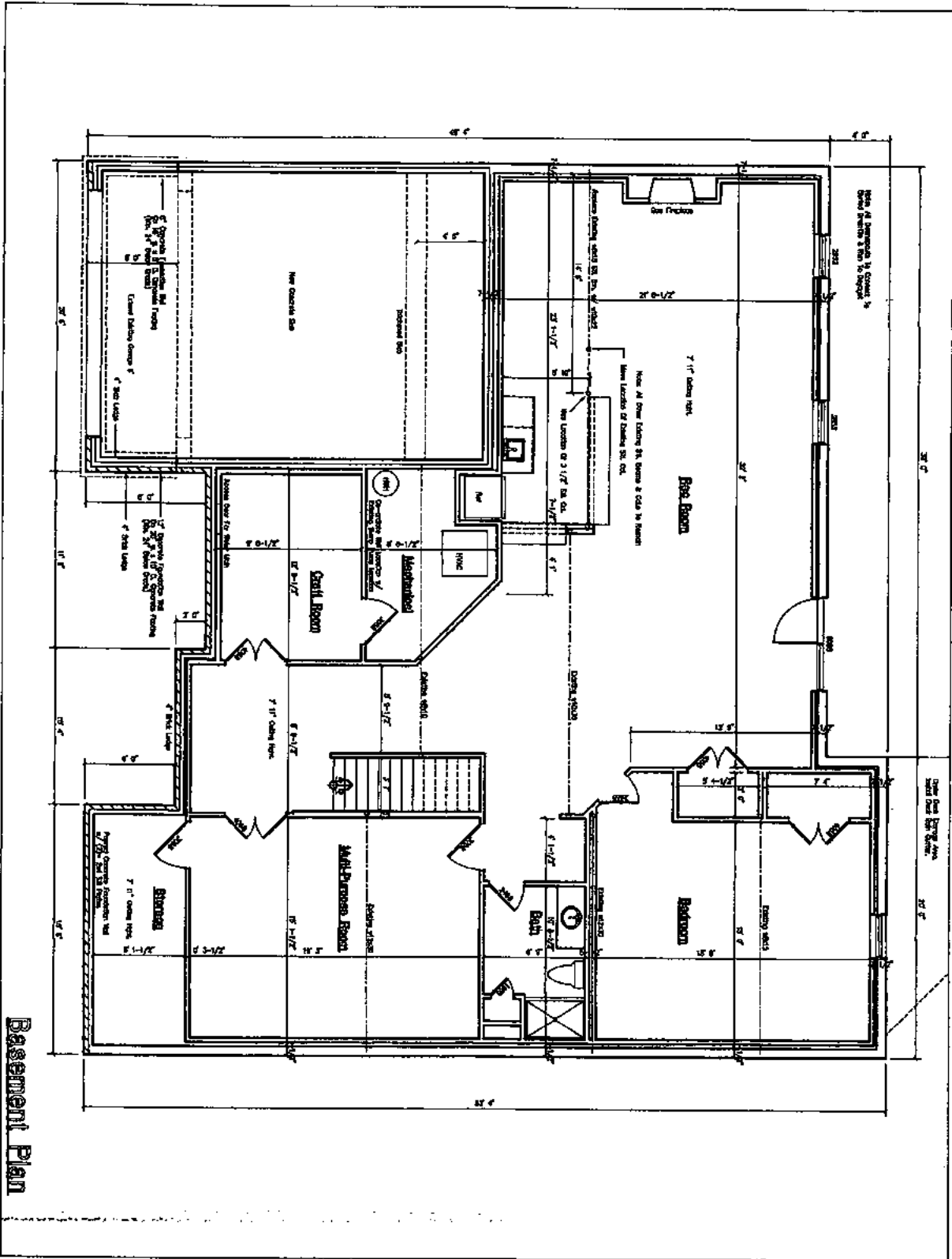




1st Floor Plan



2nd Floor Plan



Basement Plan